

## ART OF THE CENTRAL PARK LIBRARY

Lynne-Rachel Altman

*"Praise the Children"*

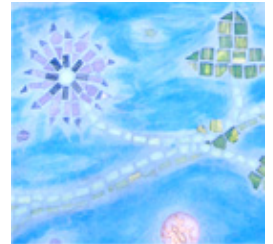


Lynne-Rachel Altman received her Master of Fine Arts in Sculpture and Glass from the California College of Arts and Crafts in Oakland. She also holds a Bachelor of Arts in English from the University of California, Berkeley, and has written and created a number of artist books. Lynne works out of her studio in the Bay Area and has exhibited in numerous museums and galleries world wide. Her other public art projects include a mural at an Israeli elementary school and street inserts in downtown Berkeley's Arts District.

Located in the Children's Garden, this piece features stoneware tiles bearing the individual letters of the quote, "Praise the Children and They will Grow" combined with lush vines and flowers in glass mosaic floating in a field of brightly colored concrete. Circles of thick, colored glass entice children to look in and find the cast creatures hidden inside. The different materials in lively colors create a focal point for the garden and invite touch and discovery while providing an area for parents and children to sit and enjoy the surroundings.

*"Three of my favorite things in the world are libraries, children, and gardens. I am thrilled to have the opportunity to create something that can be surrounded by that which I value so highly. I hope the inserts I have made for the steps in the Children's Garden will bring as much joy to others as books, gardens, and children have brought to me!"*

**Largest step approx. 24" x 18" Handmade ceramic tile, mosaic, cast glass, colored concrete, 2004**



*click thumbnails to enlarge*

[< back to artists >](#)

[< library home >](#)